

MARCH 2023

CRITICAL THINKING NOODLER



Pros and Cons

News from Thursday, February 23rd

[Listen to the Episode](#) ▶

New prints of several books by the late Roald Dahl, like *Charlie and the Chocolate Factory*, *The BFG*, *James and the Giant Peach* and *Matilda* have undergone publisher 'edits' to replace what some might consider offensive language. According to *The Telegraph* newspaper, hundreds of words, including descriptions of characters' appearances, races, and genders, have been changed or removed in at least 10 of his novels. While some are celebrating the changes, others — liked famed author *Salmon Rushdie* — call it censorship.

Do you think that books, especially kids' books, should be updated to remove or change parts that might have been acceptable when they were written, but are now considered offensive? Write out two reasons they should be changed and two reasons they should not.

+ + +

Want to showcase your students' work?

Send it to us at wehearyou@kidnuz.org and we it might be featured on our social media channels or website!



Test it!

News from Thursday, February 9th

[Listen to the Episode](#) ▶

British researchers have apparently pinpointed the exact time of day when most of us are most frazzled — and that time is 7:23 am. The recent study polled 2,000 Brits and found that for many, stress began even before our little daily dramas, which, they found, is typically around 7:50 am.

Do you think kids and adults 'stress out' at the same time of day? Poll at least five adults and five children who you know, asking what time of day is the most stressful for them (and why) and write up your results.

Name	Time of Day and Why

+++

Want to showcase your students' work?

Send it to us at wehearyou@kidnuz.org and it might be featured on our social media channels or website!



Design it!

News from Friday, February 17th

[Listen to the Episode](#) ▶

A New Jersey restaurant is making waves after announcing a ban on children under 10. Starting next month, Nettie's House of Spaghetti in Tinton Falls will no longer welcome kids in their dining room. On their Facebook page, the restaurant owners said, "We love kids. We really, truly, do. But lately, it's been extremely challenging to accommodate children..." Why the ban? Their reasons include "noise levels, lack of space for high chairs, cleaning up crazy messes, and the liability of kids running around the restaurant."

Design a restaurant that serves only kids. What would be different about the restaurant to make it perfect for them - and that would convince parents to drop off their kids for a meal unsupervised? Either write out a description and/or draw a map of the restaurant, with text boxes explaining how it would work.

+++

Want to showcase your students' work?

Send it to us at wehearyou@kidnuz.org and it might be featured on our social media channels or website!



Make a Pitch!

News from Thursday, February 23rd

[Listen to the Episode](#) ▷

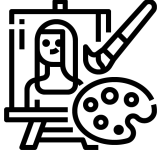
It's probably no surprise that people like working less, but a new study shows employers may like it too. Results are now in from the largest four-day work week trial and, according to Bloomberg, it was hugely popular. More than 60 companies and nearly 3,000 employees in the UK tried out the shorter schedule from June through December. The results: higher revenue, lower staff turnover and less worker burnout. Over ninety percent of participating companies said they would keep the experiment going, with some deciding to make the change permanent.

Some school districts have a 4-day school week, in part to cut down on the cost of bussing students to and from school. If you think a shorter school week would benefit you, write a letter to your principal suggesting that your school try it, and explain why you think it would be a positive change.

+++

Want to showcase your students' work?

Send it to us at wehearyou@kidnuz.org and it might be featured on our social media channels or website!



Get In Their Head

News from Wednesday, February 03rd

[Listen to the Episode](#) ▶

A girls junior varsity basketball team in Churchland, Virginia canceled the rest of its season for a pretty unusual reason: during a game last month, Arlisha Boykins, an assistant coach for the high school team, put on a jersey and played alongside the teenage athletes, pretending she was a 13 year-old player. Video clips from local TV station W-A-V-Y show Boykins, said to be in her early 20's, blocking a shot, dribbling past a player, and driving to the basket to make a layup. The Portsmouth Public Schools said Boykins, who had been hired last August, is no longer employed there. At a meeting last week with school officials, the players and their parents, it was agreed it would be best NOT to continue the season.

Imagine the thoughts and feelings that the Churchland players, the opposing team, and Coach Boykins were each having before, during, and after Boykins went on the court. Draw a picture with a thought bubble for each.

Use the worksheet on the next page.

+++

Want to showcase your students' work?

Send it to us at wehearyou@kidnuz.org and it might be featured on our social media channels or website!

The coach

Before Coach Boykins joined	While Coach Boykins played	After the switch was revealed

The opposing team's players

Before Coach Boykins joined	While Coach Boykins played	After the switch was revealed

Coach Boykins

Before Coach Boykins joined	While Coach Boykins played	After the switch was revealed

+++

Want to showcase your students' work?
Send it to us at wehearyou@kidnuz.org and it might be featured on our social media channels or website!

+++
Want to showcase your students' work?
Send it to us at wehearyou@kidnuz.org and it might be featured on our social media
channels or website!